



ORGANIZATIONAL UNIT PROPOSAL FORM

DIRECTIONS: Use this form when proposing a new organizational unit, center, institute, department, school, or college.

DATE OF REQUEST: January 21, 2016

INSTITUTION: University of Nevada, Las Vegas

NAME OF PROPOSED UNIT: UNLV Ackerman Center for Autism and Neurodevelopment Solutions

DATE OF IMPLEMENTATION: : July 1, 2016

<i>Date of AAC Approval:</i> March 2, 2016
<i>Date of Board Approval:</i>

PART 1

A. Action requested

Approval for the UNLV School of Medicine to create a comprehensive, multi-disciplinary premier teaching, research, and clinical center to ensure every infant, child, adolescent, and adult with autism spectrum disorder has access to high quality, multidisciplinary diagnostic, treatment, and intervention services for patients and families. The center will operate as a non-profit 501(c)(3) and will be supported by Grant A Gift Foundation (GAGF) a separate non-profit 501(c)(3) dedicated to raising funds solely to support the center and to provide financial assistance for patients seeking services at the center.

B. Brief description and purpose of proposed unit

Autism spectrum disorder affects one in every 68 children, including 1 in every 42 boys. It is currently the fastest-growing developmental disorder in our country, and ironically the least funded for research, treatment, and education:

- Every 20 minutes a child is diagnosed with autism; treatment costs a family \$40,000-60,000 a year on average, or up to \$3.4 million per person over a lifetime.
- In the U.S., 50,000 youth with autism are transitioning into adults without adequate vocational and transition planning, and this problem will continue to grow along with the incidence of autism.
- In Clark County alone, more than 4,750 children and youth are living with some form of autism spectrum disorder. This number is approximately 7,000 in Nevada as a whole. These numbers are growing at a rate of five percent annually.

As staggering as the numbers are, the effects of autism are far greater than financial. Autism obviously affects the individual, and it also affects the individual's parents and siblings, the extended family and friends, touching all aspects of life and development over a lifetime. For those families affected by autism spectrum disorder, there are many questions – but there are not many solutions – accessing care in Southern Nevada is difficult, fragmented, and sparse. UNLV School of Medicine and its partner – GAGF – want to ensure all patients afflicted from neurodevelopment disorders and

their families have access to a “medical home” – one that provides all the services needed, and in one place.

The UNLV Ackerman Center for Autism and Neurodevelopment Solutions will provide comprehensive diagnostic, treatment, and intervention care for patients with Autism and/or a related neurodevelopment disorders; train highly competent and new physicians; provide training and support for multidisciplinary teams and underserved intervention services; and advance research; while being fully funded from the outset. The center is the first one of its kind in Southern Nevada combining cutting-edge diagnosis, treatment, training, and programming (e.g., advocacy, service navigation, intervention, and vocational training) for all age groups, in a streamlined and coordinated manner in one outpatient setting. The center will work to advance research related to causes of neurodevelopment disorders and how to better prevent, diagnose and treat them.

The center will not only be a tremendous resource for thousands of Nevada children and families affected by Autism Spectrum Disorder (ASD), but it will put UNLV on the map as a premier leader in ASD multidisciplinary diagnostic, treatment, intervention, education and research.

C. Outline plans for the success of the proposed unit

The UNLV School of Medicine has assembled esteemed clinicians and researchers specializing in ASD to provide early diagnosis, treatment, and intervention services for more than 4,200 patients in Southern Nevada and throughout the state annually; and to advance research in prevention and treatment. The center will disseminate research through both scholarly outlets and translation to clinical care practice settings through Clinical Medical Education and other forms of training.

The center is designed to unfold in three viable and sustainable phases:

- Phase 1 involves opening the center with “Multidisciplinary Diagnostic Assessment” teams in developmental pediatrics, neuropsychology, genetics, and neurology. During this phase the center will provide much needed diagnostic services that have long been a barrier for Nevada families. The center will also provide evidence-based comprehensive care for underserved birth to three-year old children newly diagnosed with Autism. Care will not only include diagnosis and treatment but also social, adaptive and vocational training and intervention services for underserved older adolescents and young adults. These services are in extremely high demand and through the center, are established in one setting to better serve patients and their families in an efficient and affordable way. The center also will provide outstanding multidisciplinary training for professionals. Interdisciplinary research teams will be assembled with the goal of developing defined research programs in relation to determining the causes of autism, finding new treatments, and identifying treatment and intervention strategies that address social and vocational challenges facing patients with autism and their families over the life course.
- Phase II will continue to expand and grow the “Multidisciplinary Diagnostic Program” and offer a continuum of care for each age and developmental level from birth to young adulthood. Patients and their families will have the opportunity to participate in ongoing treatment and intervention clinical trials. Translational research will aim to disseminate new evidence to advance understanding of prevention, treatment and intervention, and clinical care practices.
- Phase III involves increasing services to include all ages for evidence-based, empirically supported programs that clearly distinguish an center of excellence in care, treatment, and sustainability in Southern Nevada. Research will expand clinical trials and translational research efforts to include training centers to provide ongoing clinical medical education and training for education and social service professionals.

Facility

The proposed center will be located at 610 Rancho Drive, a 10,000 square-foot facility in the heart of the Las Vegas Medical District near the future home of UNLV School of Medicine. In addition, the partnership with GAGF provides a proven foundation dedicated to raising funds to offset the costs for the patients needing these services as well as the center's operations. The first three years of the facility's lease has been funded by a private GAGF donor. The GAGF is also providing funding to cover operational cost in year one, and funding all building-related expenses for the first three years or until the center is fully self-funded.

The center's esteemed faculty and partnership with GAGF ensures its ability to receive state and federal grants, research grants, and philanthropic support. The GAGF's strategic plan outlines its plans to raise \$20 million for the center by 2022.

In addition to philanthropic support, the center will be supported through billing patients for care services. Revenue derived from clinician services, coupled with GAGF funds, state and federal grants, will financially sustain the center to remain viable and grow its many levels of services for generations.

PART II

A. Mission statement

Ensure every infant, child, adolescent, and adult with neurodevelopmental disorders (e.g., Autism) has access to high quality, multidisciplinary diagnostic, treatment, and intervention services for patients and families regardless of their ability to pay. All patients will receive collaborative evidence-based, empirically supported assessment and treatment, and intervention services in one outpatient setting.

B. Goals and objectives

i. Teaching

1. Improve Autism spectrum disorder care by using a "Multidisciplinary Diagnostic and Intervention Approach." This approach will provide intensive training from outstanding faculty specializing in the disorder. These patients create a cross-disciplinary approach with patients from a variety of fields including medicine (pediatrics, family medicine, psychiatry, neurology), psychology (undergraduate to doctoral students, interns, post-doctoral), educational/school psychology, special education, preschool to secondary educators (undergraduate to graduate students), speech/language therapists, social work, nursing, dental residents, occupational therapists, physical therapists.
2. Provide current comprehensive autism training in multidisciplinary diagnostic clinic from initial contact with families to ongoing intervention and service provision and navigation. The center is the only site in Southern Nevada providing this type of multidisciplinary training and research.
3. Provide early-stage professionals with cutting-edge experiences that create a knowledgeable and experienced workforce who will remain in the community to serve autism patients and their families.
4. Provide education and training to families, advocates, and paraprofessionals so they can better serve the needs of the ASD patient population.

ii. Research

1. Develop well-defined research programs in relation to determining the causes of ASD, finding new treatments, and identifying treatment and intervention strategies that address social and vocational challenges facing patients with ASD and their families over the life course.
2. Provide research opportunities for UNLV students in the areas of ASD diagnoses, treatment and care, and dissemination and implementation of evidence-based diagnoses, treatment and care.
3. Develop an ASD database for research purposes.
4. Develop collaborative research partnerships with faculty within and outside of UNLV as well as institutes across the country (e.g., UC Davis MIND Institute, Medical Investigation of Neurodevelopmental Disorders)

iii. Service

1. To provide Southern Nevada, and especially underserved members of the community, with comprehensive ASD diagnostic, treatment, and intervention care from birth through the lifespan. These services will extend not only to patients with ASD but also to their families.
2. To provide a multidisciplinary center that addresses the in-service and pre-service education and training needed to support the diagnosis and care of patients with ASD as well their families.
3. To disseminate research findings to further understand the causes as well as the care and treatment of ASD over the lifespan.

iv. Clinical

1. Provide early diagnosis of young children with ASD to enable families to start treatment and intervention services more quickly.
2. Improve the expertise and rate of early and dual diagnoses including genetic, psychiatric, learning, and behavioral disorders.
3. Provide an evidenced based comprehensive ASD diagnosis and treatment program for the underserved population.

C. Major participants or collaborators

i. Internal to campus

The UNLV School of Medicine will work with the health-related schools and colleges. There are many opportunities at the center for students pursuing degrees in social work, nursing, special education teachers, psychiatry and behavioral health. Collaborative agreements are currently being explored.

UNLV College of Education and the UNLV Center for Autism for Spectrum Disorder (CASD): The UNLV School of Medicine and the UNLV College of Education (COE) both share the same goal of developing a fully-integrated Autism system of care. One that allows for a strong education focus while also ensuring a strong medicine and research focus. The center can help

fill existing gaps for the education, diagnosis, treatment and intervention of Autism and related disorders. CASD identified these three areas for collaboration:

- The CASD would use the center as a field placement site, as appropriate, for students from a variety of disciplines to gain diagnostic experience with younger children.
- CASD and the center could partner on federal and state funding opportunities that promote holistic, interdisciplinary direct services to clients and families; support basic and applied research on autism, efficacy and effectiveness studies of interventions, and professional development/training.
- CASD and the center could partner on interdisciplinary professional development opportunities.

Julie Foutz Beasley, Ph.D., Adjunct Professor with UNLV School of Medicine. Dr. Beasley will be the clinical director for the center and will be a FTE of UNLV School of Medicine this spring.

Mario Gaspar de Alba, M.D., (FTE UNLV School of Medicine) will provide key diagnostic services for the center's patients and train medical students and residents.

Colleen Morris, M.D., Clinical Professor, Adjunct Professor UNLV School of Medicine, will contribute clinical and genetic research expertise to the center. Currently, she has an appointment with UNSOM which will transfer to the UNLV School of Medicine in July of 2017. Her collaborative network includes Nevada Early Intervention Services and Clark County School District (CCSD) where she provides clinical services and training. In addition, she will train medical students and residents.

Rooman Ahad, M.D., Adjunct Professor UNLV School of Medicine, will provide clinical neurological services to patients of the center, as well as train medical students and residents. She has an appointment with UNSOM, which will transfer to UNLV School of Medicine in July of 2017.

Michael Nasiak, M.D., (.51 FTE UNLV School of Medicine) will connect the center with researchers from the Nevada Institute for Personalized Medicine (NIPM). He will work with a team to conduct ASD genomic research to complete genetic evaluations of Autism and related development for research being conducted by NIPM. This work will advance NIPM's genetic research

Mark Guadagnoli, Ph.D., Professor and Director of Intersession Curriculum (FTE UNLV School of Medicine) will have assigned workload at the center. He can contribute motor control and learning expertise to treatment and intervention research.

ii. External to campus

The Grant a Gift Foundation (GAGF) is a 501(c)(3) with the mission to provide research, resources and leadership for the development of real solutions that provide better outcomes for both patients and families living with autism. In addition, GAGF acts as a community safety net by filling in treatment and funding gaps not covered by state and federal resources or insurance. The organization achieves this by collaborating with other organizations, state agencies, or providers to provide children with autism spectrum disorder, growing up in Nevada, a better quality of life and future as they transition into adults. The GAGF is providing \$1,000,000 in seed money from a private donor to help launch the center and sustain the center for the first three years.

The Leadership Education in Neurodevelopmental and Related Disabilities (LEND) program is designed for training cross-discipline practitioners and family members of children with

neurodevelopmental disabilities. This is a statewide program that was implemented by University of Nevada Reno. Training occurs in Reno and in Las Vegas. With the UNLV School of Medicine, the LEND program will have more trainees from Southern Nevada. Dr. Gaspar de Alba and Dr. Morris will participate in coordination and training through LEND. This is a major collaboration. The goal is to develop a LEND program for Southern Nevada to provide the cross-disciplinary training to grow the program in four years. LEND provides grant funding for its training program.

Autism Treatment Assistant Program (ATAP) is a major funding source for diagnostic and treatment programs for children with Autism. ATAP recently approved the Early Start Denver Model for Young Children with Autism for ATAP funding. The center will utilize available ATAP funding to implement the “Early Start Denver Model program” for underserved Birth to 3-Year old population. This will include diagnostics and early intervention services for very young children and their families. The center will implement this program immediately. The Early Start Denver Model for Young Children with Autism is designed as a multidisciplinary team approach and integrates speech/language therapy and occupational therapy. Dr. Beasley, the clinical director is certified in the Early Start Denver Model for Young children from the UC Davis MIND Institute.

D. Evidence of contact within and between affected academic units

UNLV School of Medicine has many partners in the development of the UNLV Ackerman Center. Its primary partnership began in early 2015 with the GAGF, the pre-eminent southern Nevada 501(c)(3) community deliverer of autism support programs for families. Its board of directors and executive leadership is a reputable, influential and established group of supporters around autism services and awareness in the community. Since that time, we have partnered with the board and executive leadership to conjoin their current services within an academic medicine environment, supplementing those services with clinical, research and educational opportunities afforded by the School of Medicine model. In the last year of the collaboration, an MOU has been signed between the two organizations with an operating agreement now in discussion. Faculty and administrative staff are being hired for the clinical operation. A building has also been leased with tenant improvements made to the facility that will house the clinical operation, all at the generous contribution of GAGF.

Additional partners will include UNLV and CASD, who anticipates a positive relationship in the education and workforce development training for the autism sector supporting the UNLV Ackerman Center for Autism and Neurodevelopment Solutions. Lastly, the department of Psychiatry is also planning a research partnership in the area of research, as they are currently engaged in robust research around neurodegenerative genetic biomarkers research with the Cleveland Clinic and would like to be able to incorporate autism related bio marker research within this research.

The landscape for partnerships with the UNLV Ackerman Center for Autism and Neurodevelopment Solutions is vast. These are initial, but critical partnerships from which to launch the center. Moreover, they are symbolic in that they symbolize the community, clinical, research and workforce development attractions the center will attract through its core work.

E. Proposed physical location

The center’s 10,000 square-foot facility is located at 610 Rancho Lane, in the heart of the Las Vegas Medical District. The facility can easily accommodate the clinicians, office and administrative support. The current facility also provides ample space for the center to expand its faculty, professional staff and services. In year one, the facility will provide clinical space and offices for the center's physicians, office staff and clinical support. The GAGF executive director and staff also will be housed at this location.

The GAGF is covering the cost of the lease, all building-related expenses for the first three years, or until the center is self-funded. The GAGF also is funding all the expenses to make the facility a fully functioning comprehensive diagnostic, treatment, and research center. In addition, they will cover the operating budget (personnel, materials, utilities, etc.) for the first year of operation.

F. Proposed organizational structure (include organizational structure within the campus)

See organizational chart -- Attachment 1

G. Activities to be sponsored (e.g. courses, seminars, research, and outreach) – indicate if courses or seminars will be offered through the proposed unit. Please specify if they will be offered for academic credit and applicable to a degree program. Give estimated enrollment.

Teaching

The center will be involved in a comprehensive set of activities that will serve the patients with ASD and their families. Specifically, the following will be provided:

- Free trainings for organizations and agencies in the Las Vegas community. This includes training for day cares, clinics, schools, parent groups, faith-based organizations, and private and public agencies.
- On-going research investigating the clinical and basic sciences regarding ASD.
- Provide an environment and training for patients who desire to work with people with ASD. This includes but is not limited to medical residency (pediatrics, family medicine, psychiatry, neurology), psychologists (undergraduate to doctoral students, interns, post-doctoral), educational/school psychology, special education, preschool to secondary educators (undergraduate to graduate students), speech/language therapists, social work, nursing, dental residency, occupational therapists, physical therapists.

Research/creative activities

All of the centers research activities will be ongoing. These activities include but will not be limited to:

- Development of defined research programs
- Conduct of research including clinical trials
- Contracted research
- Grant submission
- Research dissemination
- Research translation

Public service/training/contracts

All of the center's public service will be ongoing. These activities will include providing evidence-based comprehensive clinical care for ASD patients and their families. Care will not only include diagnosis and treatment but also social, adaptive and vocational training.

The center will provide ongoing multi-disciplinary training for an array of health care and social service professionals. Training will span both in-service and pre-service professionals.

H. Resource Analysis – source of funds necessary for the proposed change (enrollment-generated state funds, reallocation of existing funds, grants, other state funds)

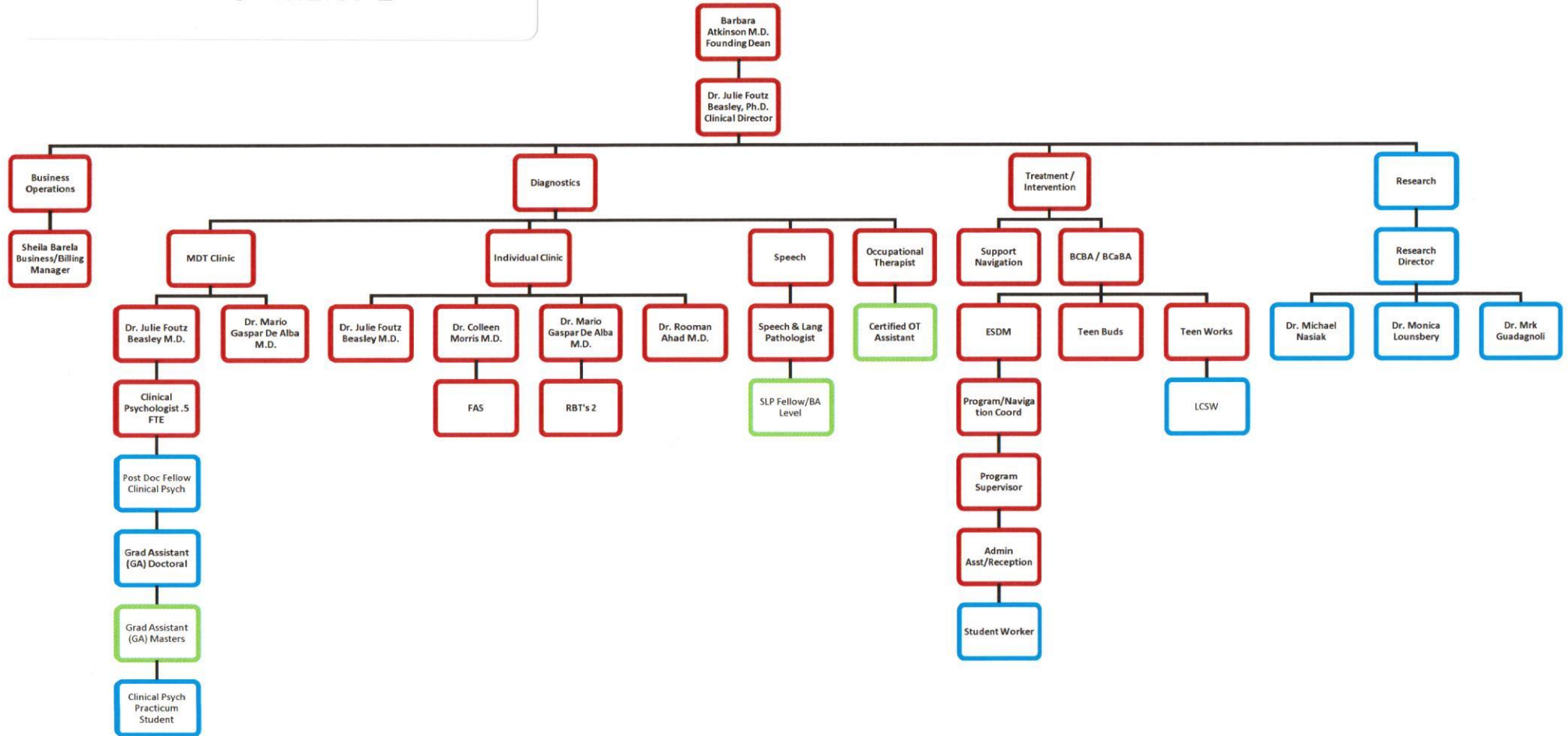
Center will be self sustaining.

I. Projected Budget – identify portions of costs which will require state resources, grants, gifts and/or contracts

The center will be self sustaining. The GAGF, our partner, is dedicated to raising funds for the center Revised 5.6.2016 per request from NSHE.

UNLV Ackerman Center for Autism and Neurodevelopment Solutions

ATTACHMENT 1



UNLV Ackerman Center for Autism and Neurodevelopment Solutions

YEAR 1 - Total Staff

Doctors:

Dr. Mario Gaspar De Alba M.D.
Dr. Colleen Morris M.D.
Dr. Rooman Ahad M.D.

Clinical Staff:

Clinical Director/Psychologist
Operations/Billing Manager
BCBA / BCaBA
Clinical Psychologist .5 FTE
Administrative Assistant /Reception
Speech and Lang Pathologist
Occupational Therapist
Program/Navigation Coordinator
Program Supervisor
RBT's 2

YEAR 2 - Total Staff

Doctors:

Dr. Mario Gaspar De Alba M.D.
Dr. Colleen Morris M.D.
Dr. Rooman Ahad M.D.

Researchers:

* Monica Lounsbery Ph.D.
* Mark Guadagnoli Ph.D.
* Dr. Michael Nasiak M.D.

Clinical Staff:

Clinical Director/Psychologist
Operations/Billing Manager
* Research Director
BCBA / BCaBA
Clinical Psychologist .5 FTE
* Post Doc Fellow Clinical Psych
* Clinical Psych Practicum Student
* Grad Assistant (GA) Doctoral
* Student Worker
Administrative Assistant /Reception
Speech and Lang Pathologist
Occupational Therapist
* LCSW
Program/Navigation Coordinator
Program Supervisor
RBT's 2

YEAR 3 - Total Staff

Doctors:

Dr. Mario Gaspar De Alba M.D.
Dr. Colleen Morris M.D.
Dr. Rooman Ahad M.D.

Researchers:

Monica Lounsbery Ph.D.
Mark Guadagnoli Ph.D.
Dr. Michael Nasiak M.D.

Clinical Staff:

Clinical Director/Psychologist
Operations/Billing Manager
Research Director
BCBA / BCaBA
Clinical Psychologist .5 FTE
Post Doc Fellow Clinical Psych
Clinical Psych Practicum Student
Grad Assistant (GA) Doctoral
* Grad Assistant (GA) Masters
Student Worker
Administrative Assistant /Reception
Speech and Lang Pathologist
* SLP Fellow/BA Level
Occupational Therapist
* Certified OT Assistant
LCSW
Program/Navigation Coordinator

* Newly Added

Gaudin Automotive Group

January 18th 2016

GAUDIN FORD

To: Dean Barbara Atkinson, UNLV Medical School

FORD COUNTRY

GAUDIN
MOTOR
COMPANY

MUSTANG SALLY'S
DINER

THE DAILY GRIND
COFFEE BAR

GAUDIN BODY &
PAINT CENTER

MOTORSPORTS
ENTHUSIASTS

I have been asked to write this letter regarding the pending Institute of Excellence for neuro-genetics that will be a collaboration between the new UNLV School of Medicine and the Grant a Gift Autism Foundation. I have been involved in supporting children's charities for over 35 years in the Las Vegas Valley. The last 20 years has been devoted to autism and neuro-genetics as my son is on the autistic spectrum so I know the dire need our community and our state have for support in this area. We believe this new institute will be unique, not only in our community, but very likely in the nation. It will have the capability of housing all of the support services available to the families dealing with neuro-genetic disorders under one roof. There are currently only a handful of certified specialists in all of Clark County and we plan to assemble most or all of them at our institute. This will allow patients and their families to have access to diagnostics, psychological and psychiatric evaluation, genetic research and family support programs, all by one team under one roof. The combination of these services is currently scattered throughout our community and typically takes a family at least a full year to access and then it is highly fragmented. Grant a Gift has guaranteed the lease on the new institute for the first three years. This will allow the institute to open and establish all of the new programs and services. At the same time, income streams



Gaudin Automotive Group

GAUDIN FORD

for the applicable services will be developed and our business plan call for the institute to become self-sustaining within the first two years of operation. As I am the vice-chair

FORD COUNTRY

of the foundation, my wife and I have also funded one of the initial scholarships to the new School of Medicine and have directed that scholarship to go to a student studying

GAUDIN
MOTOR
COMPANY

nuero-genetics. The last piece of our institute's mission will be to help educate those students specializing in nuero-genetics with the hope of helping them decide to stay in our community and help grow the doctor base we so desperately need here. We have

MUSTANG SALLY'S
DINER

spent many, many years working towards this institute and the community support we are receiving is overwhelming. With 1 in 62 children currently being born with

THE DAILY GRIND
COFFEE BAR

autism in America, this institute can become a leading example of how the private sector, working with the new School of Medicine can change our community forever. I

am available at any time, should you require any more information.

GAUDIN BODY &
PAINT CENTER

Most Sincerely,



Gary Ackerman

MOTORSPORTS
ENTHUSIASTS



To: Dean Atkinson
From: Jefferson Kinney, Associate Professor and Chair of Neuroscience Area,
Department of Psychology, UNLV
Re: UNLV School of Medicine Autism Institute

Dean Atkinson,

I am writing this letter to offer any support that I, or any of the other neuroscience faculty within our department may be able to provide in support of the Autism Institute being created at the UNLV School of Medicine. My colleagues and I are eager to collaborate and assist in any way possible with this important center. These collaborations may include translational research projects between our group, in particular Dr. Rochelle Hines, whose basic research is directed at autism.

In addition, the biobank for the evaluation of genetic or blood based biomarkers that is underway in my laboratory would be a great point of collaboration with the Autism Institute. Thus far our work has focused on the evaluation of genetic and protein biomarkers in Alzheimer's disease, however, this work is expanding with other researchers at UNLV and to other neurodegenerative disorders as part of the Center for Neurodegeneration and Translational Neuroscience (CNTN) P20 COBRE award recently funded. The addition of collaborative work directed at Autism and other developmental disorders would be a great addition to the biobank and precisely the collaborative work we wish to pursue. There are number of techniques and equipment that would be available to you and the rest of the Institute over the next several years.

We look forward to the opportunity to collaborate with you on these important projects. If I can provide any additional information please let me know.

Best regards,
Jefferson Kinney

Jefferson W. Kinney Ph.D.
Associate Professor
Chair, Neuroscience Area
Department of Psychology
University of Nevada Las Vegas
(702) 895-4766 (v)
(702) 895-0195 (f)
Jefferson.kinney@unlv.edu



Grant a Gift.
AUTISM FOUNDATION

January 20, 2016

Dear NSHE, Board of Regents and other invested UNLV parties:

As a parent of a child living with autism and Founder of Grant a Gift, we are very honored and excited to be working with the UNLV School of Medicine on this collaborative project to help better serve the thousands of children, youth and families touched by autism and other neurodevelopmental disabilities in Nevada.

For the first time ever in Nevada, autism treatment, research, education, advocacy and wrap-around programming will be under the same roof to provide a high quality continuum of family centered care to help individuals with autism achieve a life of greater independence and purpose in our community. This facility will also, shorten the current waiting lists families are facing and families will have more peace of mind knowing they have a medical home that can address any needs they may have.

Grant a Gift has had this vision for several years and now it will become a reality with the new UNLV School of Medicine partnership. This facility will change the trajectory of services and care for over 7,000 individuals living with autism and their family members in Nevada. We also look forward to becoming a global destination for treatment and research that will set the standard of care for other universities, institutes and centers across the country and world.

We humbly thank you for all the consideration you have shown us and look forward to supporting the success of this initiative in any way we can!

Warmest regards,

Lynnda Tache

Founder/President

Grant a Gift Foundation

72 N. Pecos Rd., Unit C

Henderson, NV 89074

ltache@grantagiftautismfoundation.org

Office 702-564-2453

Fax 702-527-5353