

iNtegrate 2 Project Update



*NSHE
Board of
Regents
Meeting
December 2016*

Agenda

- Project Progress
- Current Status and Timeline
- Workday Demonstration
- Engagement Opportunities
- Questions



Project Assessment – May 2016

Project Area	Assessment Rating May 2016
Project Management	RED
Functional Solution	YELLOW
Technical Solution	YELLOW
Change Management	YELLOW
Testing and Training	YELLOW
Communication	RED
Organizational Effectiveness	RED
Project Schedule	RED

LEGEND	GREEN	YELLOW	RED
Risk Description	1) Low risks may be encountered NO immediate action needed	2) Moderate risks may be encountered Serious deficiency and action item recommended	3) High risks may be encountered Needs to be escalated and can impact project timeline, effort or cost



Focus on Execution

- Produce Status Reports
- Provide Regular Communications & Updates
- Conduct Productive & Interactive Meetings
- Prioritize & Resolve Issues
- Identify & Mitigate Risk
- Assess & Align Resources
- Focus on Systematic Delivery
- Improved Transparency
- Perceived Leadership, Ownership and Accountability
- Increased Trust
- Observed Potential for Success



Project Progress

- Looking Ahead vs. Looking Behind
- Status Reports Provide Summary and Detailed Information on 35 Distinct Project Components
- Focus on “Current” Status and Upcoming Activities
- Designed to Highlight Successes...and Focus is Placed on Resolution of Issues and Risks

prog·ress

noun
/'prægres/

1. forward or onward movement toward a destination.
"the darkness did not stop my progress"
synonyms: forward movement, **advance**, **going**, **progression**, **headway**, **passage**
"boulders made progress difficult"

verb
/pre'gres/

1. move forward or onward in space or time.
"as the century progressed, the quality of telescopes improved"
synonyms: **go**, make one's way, **move**, move forward, go forward, **proceed**, **advance**, go on, **continue**, make headway, work one's way
"they progressed slowly down the road"



Project Status – May 2016

Project Area	Assessment Rating May 2016
Project Management	RED
Functional Solution	YELLOW
Technical Solution	YELLOW
Change Management	YELLOW
Testing and Training	YELLOW
Communication	RED
Organizational Effectiveness	RED
Project Schedule	RED



Project Status – JUNE 2016



Project Status – AUGUST 2016

Yellow	Yellow	Green	Yellow	Yellow
Green	Yellow	Green	Yellow	Green
Yellow	Green	Green	Green	Yellow
Yellow	Green	Green	Yellow	Green
Green	Yellow	Green	Yellow	Green
Yellow	Green	Green	Yellow	Yellow
Yellow	Green	Green	Green	Yellow

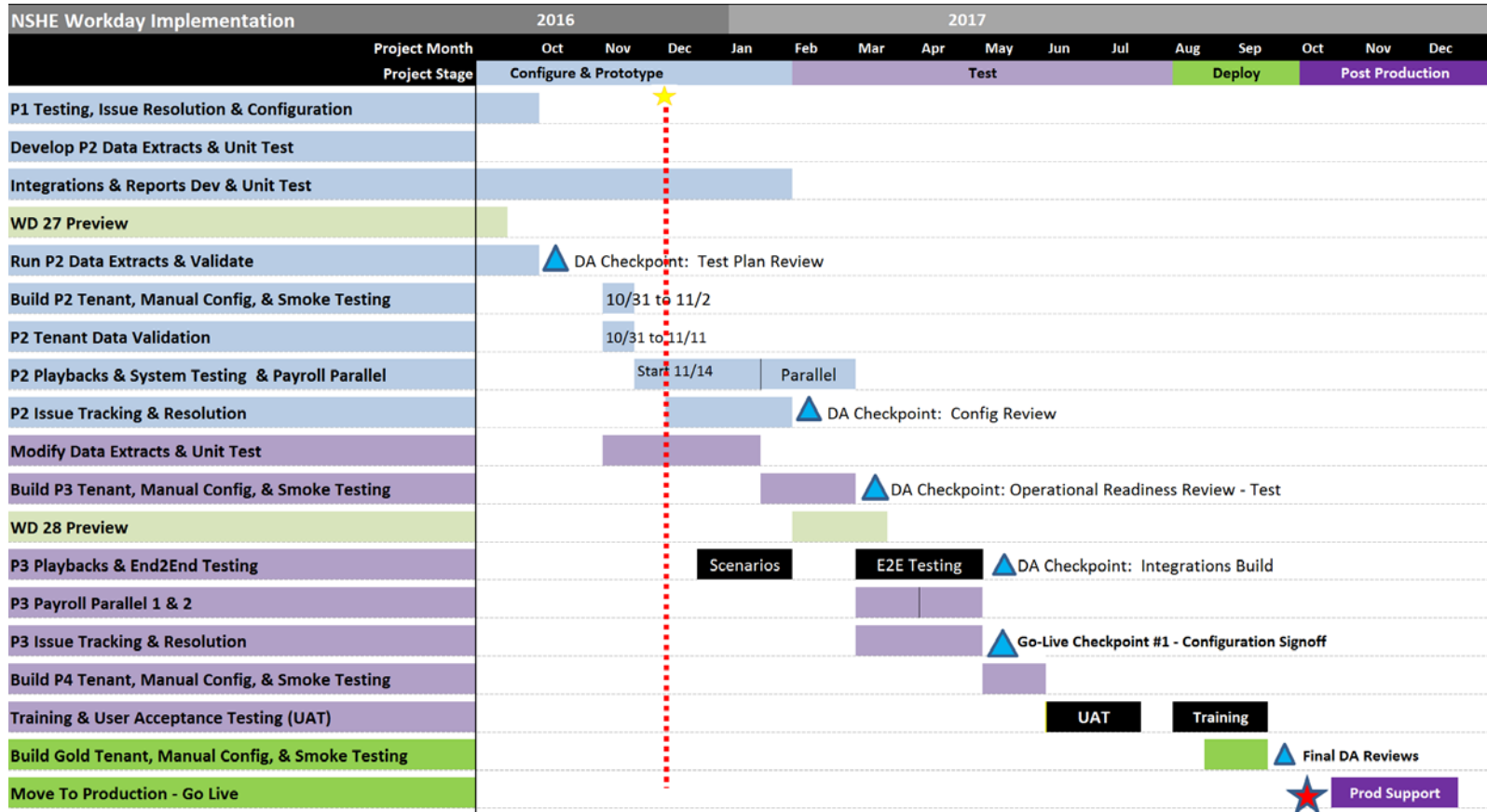


Project Status – OCTOBER 2016

Yellow	Yellow	Green	Green	Yellow
Green	Green	Green	Green	Green
Yellow	Yellow	Green	Green	Yellow
Yellow	Green	Green	Green	Green
Green	Green	Green	Green	Green
Yellow	Green	Green	Green	Green
Green	Green	Green	Green	Green



Current Status and Timeline



Workday Demonstration

Demonstration of subset of employee and manager self-service from Workday app available for iOS and Android devices.





Extensive Opportunities for Project Engagement

Campus Visits

Workday demonstrations and open forums at each campus beginning in January

Campus Points of Contact

Reach out to the respective Campus Point of contact at <http://www.integrate2.nevada.edu/POC>

Regular Communications

Project Status Reports at <http://www.integrate2.nevada.edu/weekly-project-status-report/>

Weekly Updates and Articles at <http://www.integrate2.nevada.edu/tag/news/>

Feedback

Submit feedback or questions to the Project Team at <http://www.integrate2.nevada.edu/contact-us/>

Engagement Mechanisms

Website

Browse the *iNtegrate 2* website at <http://www.integrate2.nevada.edu/>

Training Toolkit

Browse the resources available at <http://www.integrate2.nevada.edu/training/>

Email

Contact the Project Team at iNtegrate2@nshe.Nevada.edu

Questions?

- Thank you!

