

# *Western Nevada College*

## **ACTA – Getting the Data: Ten Questions Trustees Should Ask**

Presentation to the NSHE Board of Regents June 11-12, 2015



(BOARD OF REGENTS' AGENDA 06/11/15 & 06/12/15) Ref. BOR-21, Page 1 of 22

*Start Here . . . Go Anywhere* • [www.wnc.edu](http://www.wnc.edu)

# *Western Nevada College*

## **Mission**

Western Nevada College inspires success in our community through opportunities that cultivate creativity, intellectual growth and technological excellence in an environment that nurtures individual potential and respects differences.



(BOARD OF REGENTS' AGENDA 06/11/15 & 06/12/15) Ref. BOR-21, Page 2 of 22

*Start Here . . . Go Anywhere* • [www.wnc.edu](http://www.wnc.edu)

# Western Nevada College Overview

Three campuses

Five counties/school districts

8,049 square miles

Main towns --

Carson City

Fallon

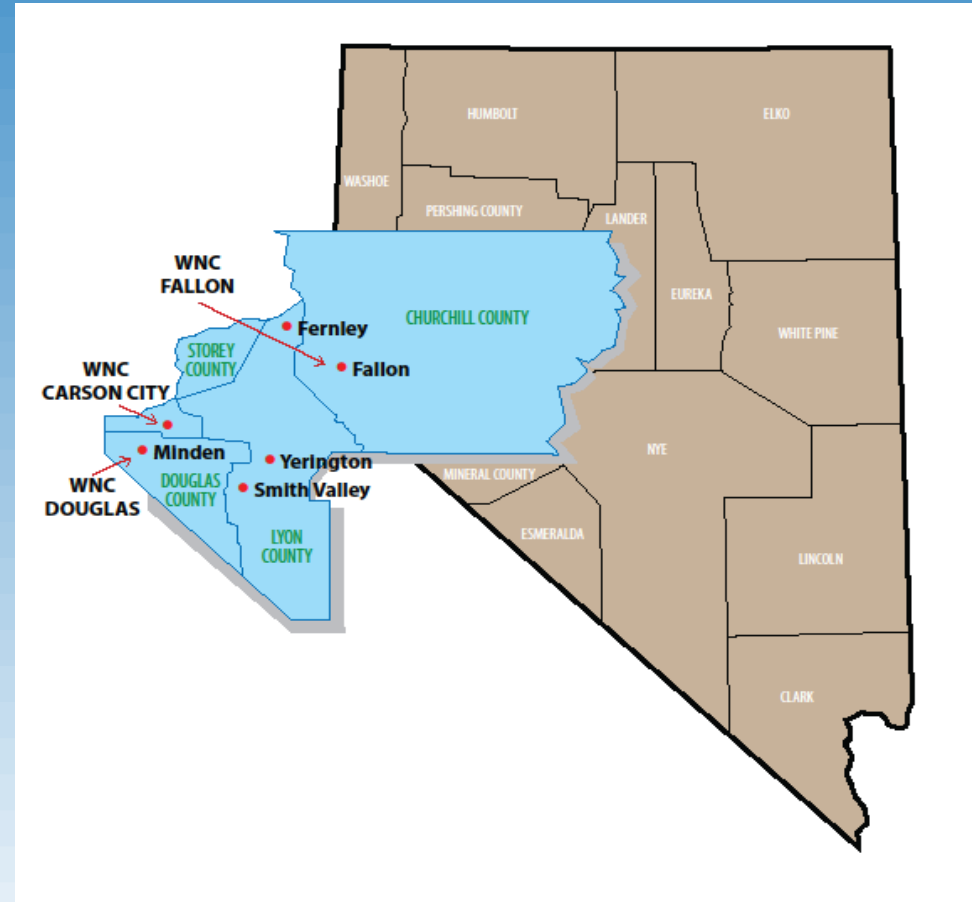
Minden-Gardnerville

Dayton

Fernley

Mineral and Pershing

Counties to GBC in 2014



(BOARD OF REGENTS' AGENDA 06/11/15 & 06/12/15) Ref. BOR-21, Page 3 of 22



*Start Here ... Go Anywhere* • [www.wnc.edu](http://www.wnc.edu)

# Western Nevada College

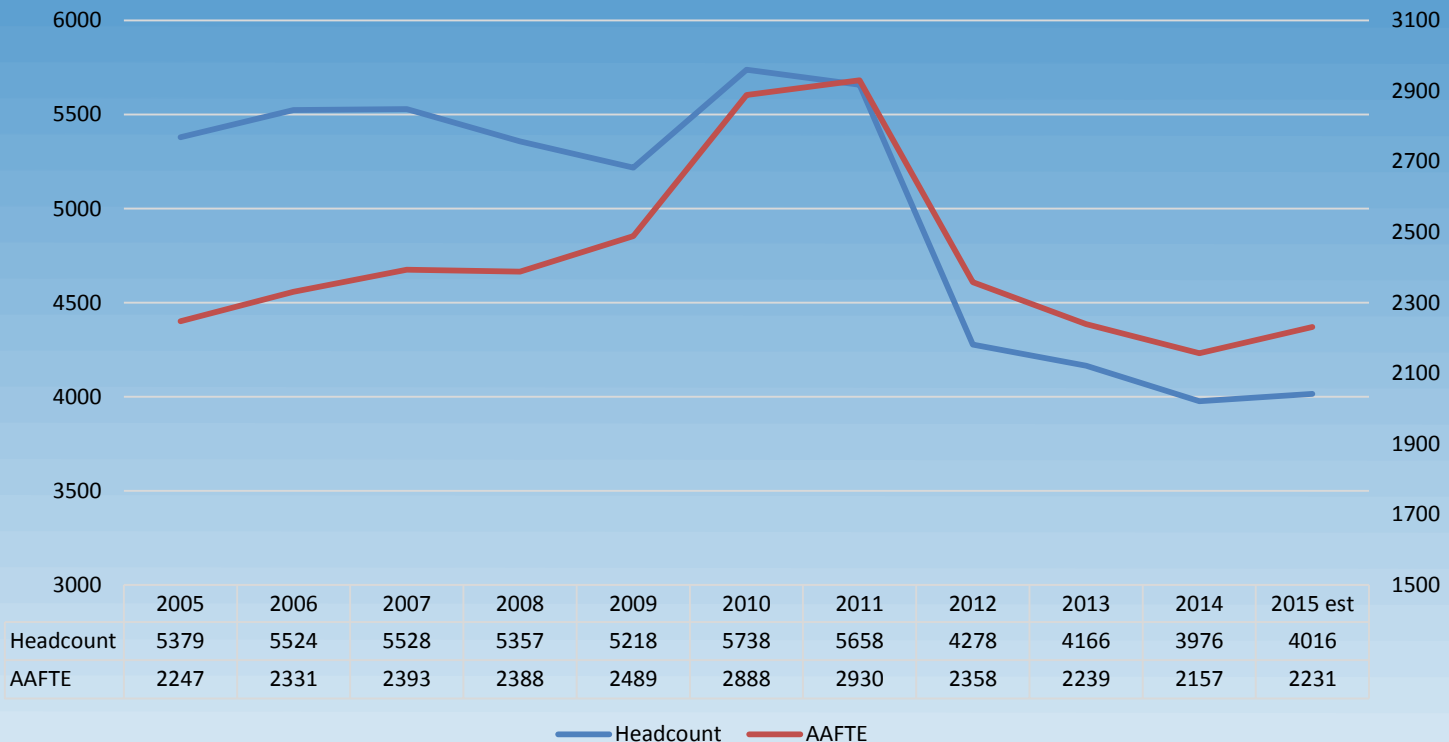
## Student Profile Fall 2014

- 59% women
- 27% minority
- 41% federal Pell grant recipients
- 842 degrees and certificates awarded FY2014
  - 531 Associate's and Bachelor's in Technology degrees
  - 33 Certificates of Achievement
  - 278 Industry Skills Preparation Certificates
- 68% AA and AS graduates enroll at a 4-year institution within one year



# Western Nevada College

## Ten-year enrollment trends: fall headcount and annual average full-time equivalent (AAFTE)



(BOARD OF REGENTS' AGENDA 06/11/15 & 06/12/15) Ref. BOR-21, Page 5 of 22

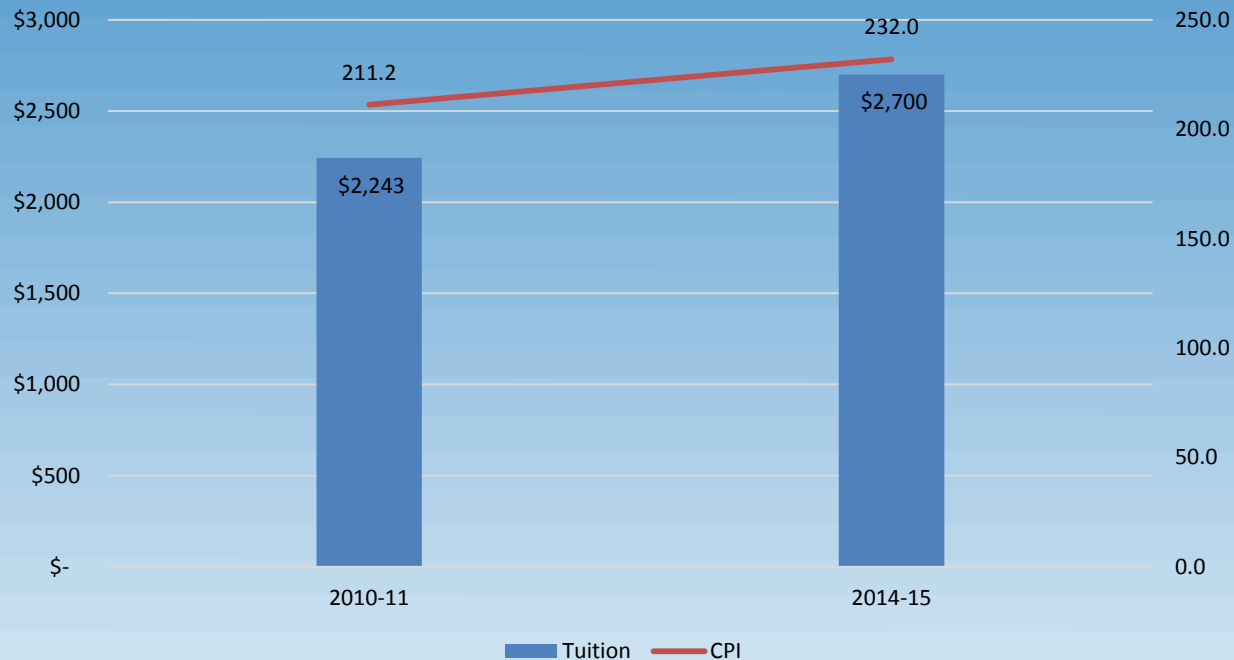
*Start Here ... Go Anywhere* • [www.wnc.edu](http://www.wnc.edu)

# Western Nevada College

**Tuition over the last five years:**

**Has it exceeded the annual Consumer Price Index?**

Tuition has increased 20.4% over the last five years while the CPI has increased 9.8% over the same time period.



(BOARD OF REGENTS' AGENDA 06/11/15 & 06/12/15) Ref. BOR-21, Page 6 of 22

*Start Here . . . Go Anywhere* • [www.wnc.edu](http://www.wnc.edu)

# Western Nevada College

**Tuition over the last five years:**

**Has it increased as a percentage of median household income?**

	2009-10	2013-14	Percent Change
WNC resident full-time annual tuition and fees	\$2,010	\$2,700	34.3%
Five-county service area average median household income*	\$55,640	\$53,919	-3.1%
Tuition as a percentage of median household income	3.6%	5.0%	38.6%

\*Comparable median household income by county from U.S. census data for 2009 and 2013.

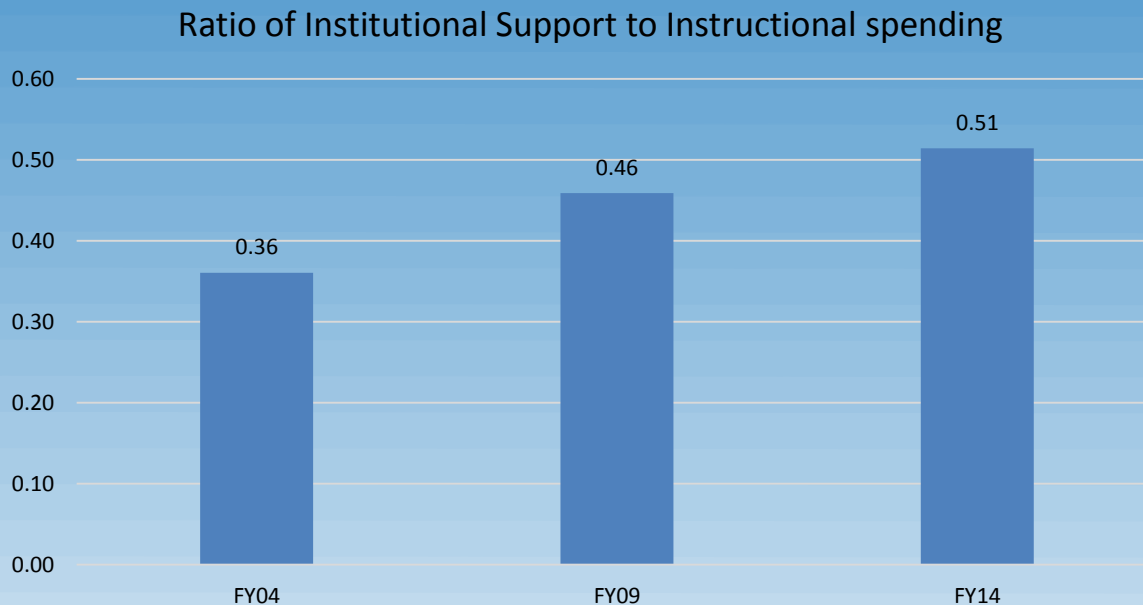


(BOARD OF REGENTS' AGENDA 06/11/15 & 06/12/15) Ref. BOR-21, Page 7 of 22

*Start Here . . . Go Anywhere* • [www.wnc.edu](http://www.wnc.edu)

# Western Nevada College

The ratio of administrative vs. instructional spending over the last 10 years: Has the growth of administrative spending exceeded that of instructional spending? Why?



While the total Institutional Support spending has actually decreased in the last 10 years the ratio has increased due to a 43% reduction in the number of full-time faculty and a greater reliance on adjunct faculty.



(BOARD OF REGENTS' AGENDA 06/11/15 & 06/12/15) Ref. BOR-21, Page 8 of 22

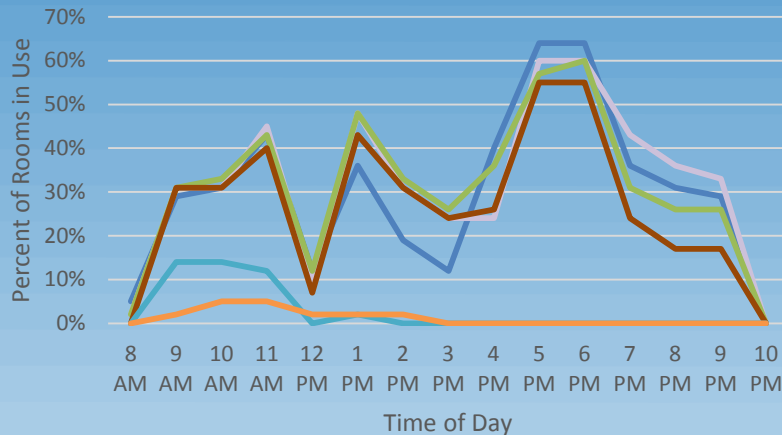
*Start Here ... Go Anywhere* • [www.wnc.edu](http://www.wnc.edu)



# Western Nevada College

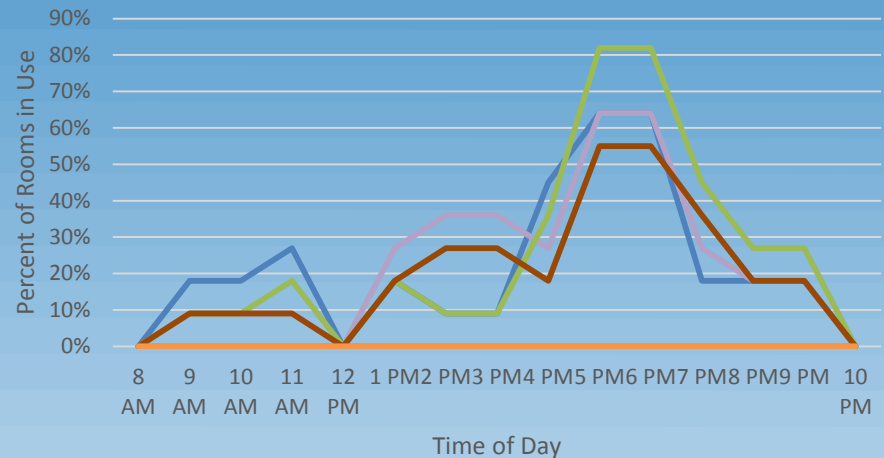
## What is our building utilization, Monday through Saturday?

Carson Campus  
FY 2014



— MONDAY    — TUESDAY    — WEDNESDAY  
— THURSDAY    — FRIDAY    — SATURDAY

Fallon Campus  
FY 2014



— MONDAY    — TUESDAY    — WEDNESDAY  
— THURSDAY    — FRIDAY    — SATURDAY

Peak use is from 5-7pm and 14% of our FTE is now online.

Bottom-line, we have capacity for growth



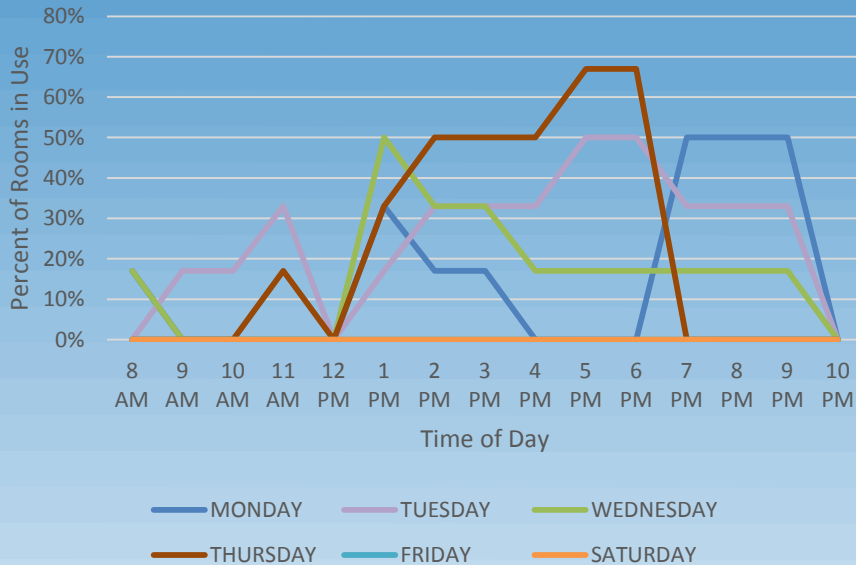
(BOARD OF REGENTS' AGENDA 06/11/15 & 06/12/15) Ref. BOR-21, Page 9 of 22

*Start Here ... Go Anywhere* • [www.wnc.edu](http://www.wnc.edu)

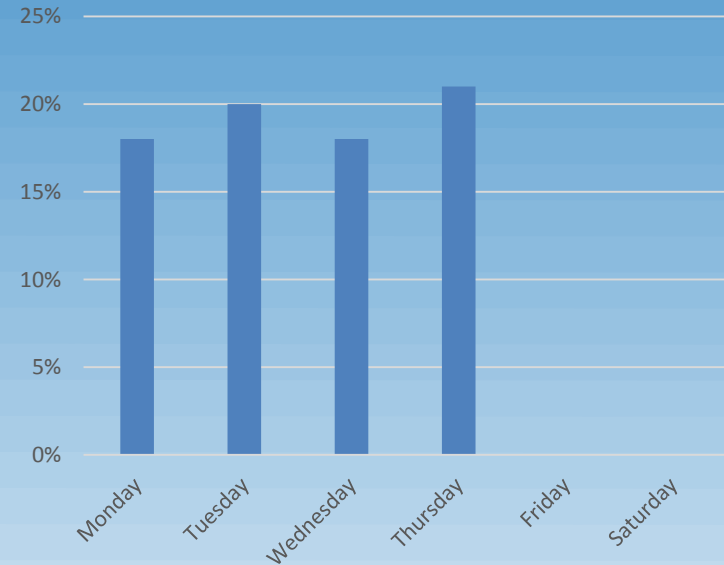
# Western Nevada College

**What is our building utilization, Monday through Saturday?  
What is our building utilization during the summer?**

Douglas Campus  
FY 2014



Space Utilization Summer 2014  
Main Buildings



Except for Jump Start classes, Douglas is now used from 2:30pm on. Summer school is a two-edged sword since we don't receive WSCH credit in relation to the funding formula for summer students.

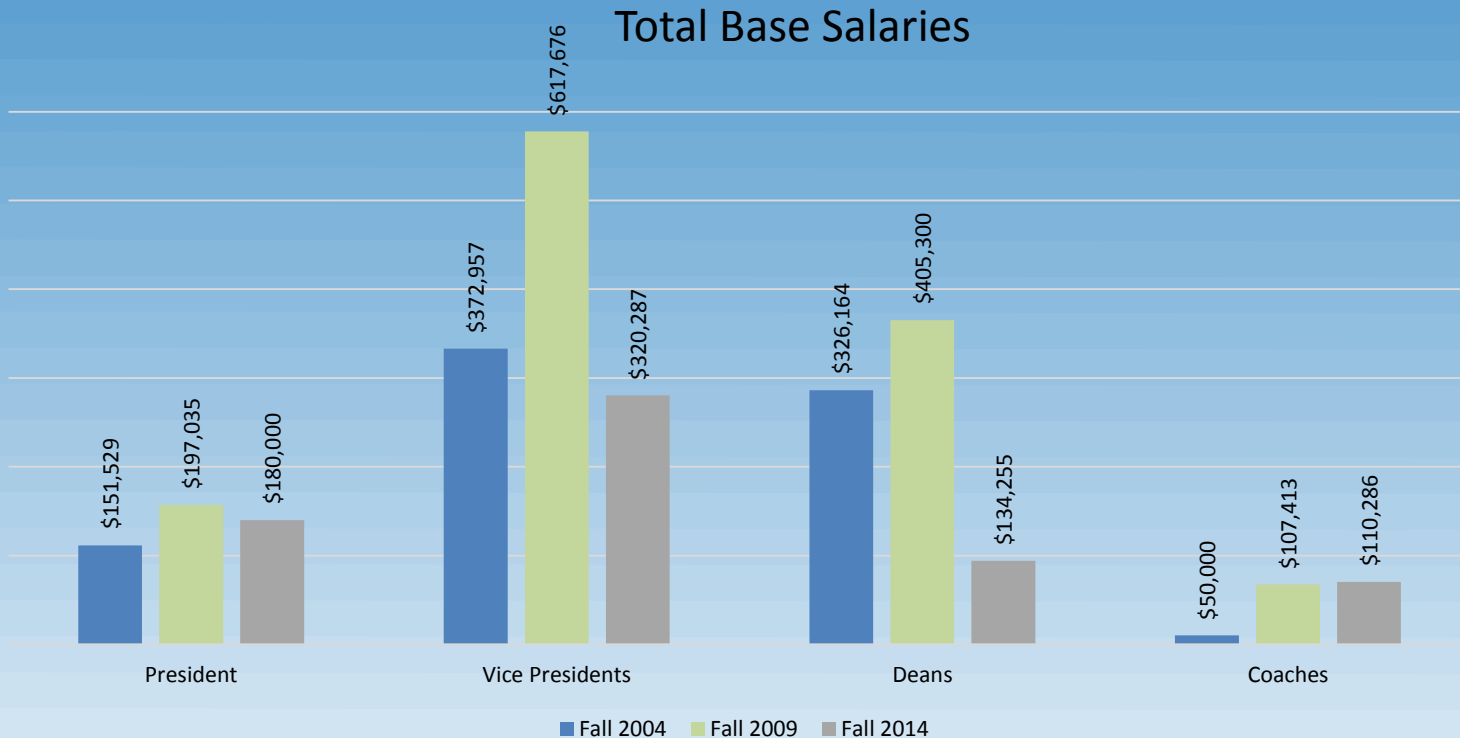


(BOARD OF REGENTS' AGENDA 06/11/15 & 06/12/15) Ref. BOR-21, Page 10 of 22

*Start Here ... Go Anywhere* • [www.wnc.edu](http://www.wnc.edu)

# Western Nevada College

What are the salaries of top administrators and athletic department personnel? How have salaries for these positions changed over the last 10 years?



From a high point in 2009, total salaries of senior administration is down in all areas except coaches where it has been essentially flat

(BOARD OF REGENTS' AGENDA 06/11/15 & 06/12/15) Ref. BOR-21, Page 11 of 22

*Start Here ... Go Anywhere* • [www.wnc.edu](http://www.wnc.edu)

# Western Nevada College

**How many courses and credit hours do faculty (tenured, tenure-track, and adjunct) teach per year?**

- Regular Faculty\*
  - 10.9 Courses
  - 31.3 Credit Hours
- Adjunct Faculty
  - 4.0 Courses
  - 12.0 Credit Hours

\*10 courses and 30 credit hours a year is considered a full load for a full-time faculty member

(BOARD OF REGENTS' AGENDA 06/11/15 & 06/12/15) Ref. BOR-21, Page 12 of 22



*Start Here . . . Go Anywhere* • [www.wnc.edu](http://www.wnc.edu)

# Western Nevada College

## How do students perform on nationally-normed tests?

- National Council Licensure Examination (NCLEX ) pass rate 95%
- National Institute for Metalworking Skills pass rate 96%
- Automotive Service Excellence pass rate 100%
- American Welding Society pass rate 69%



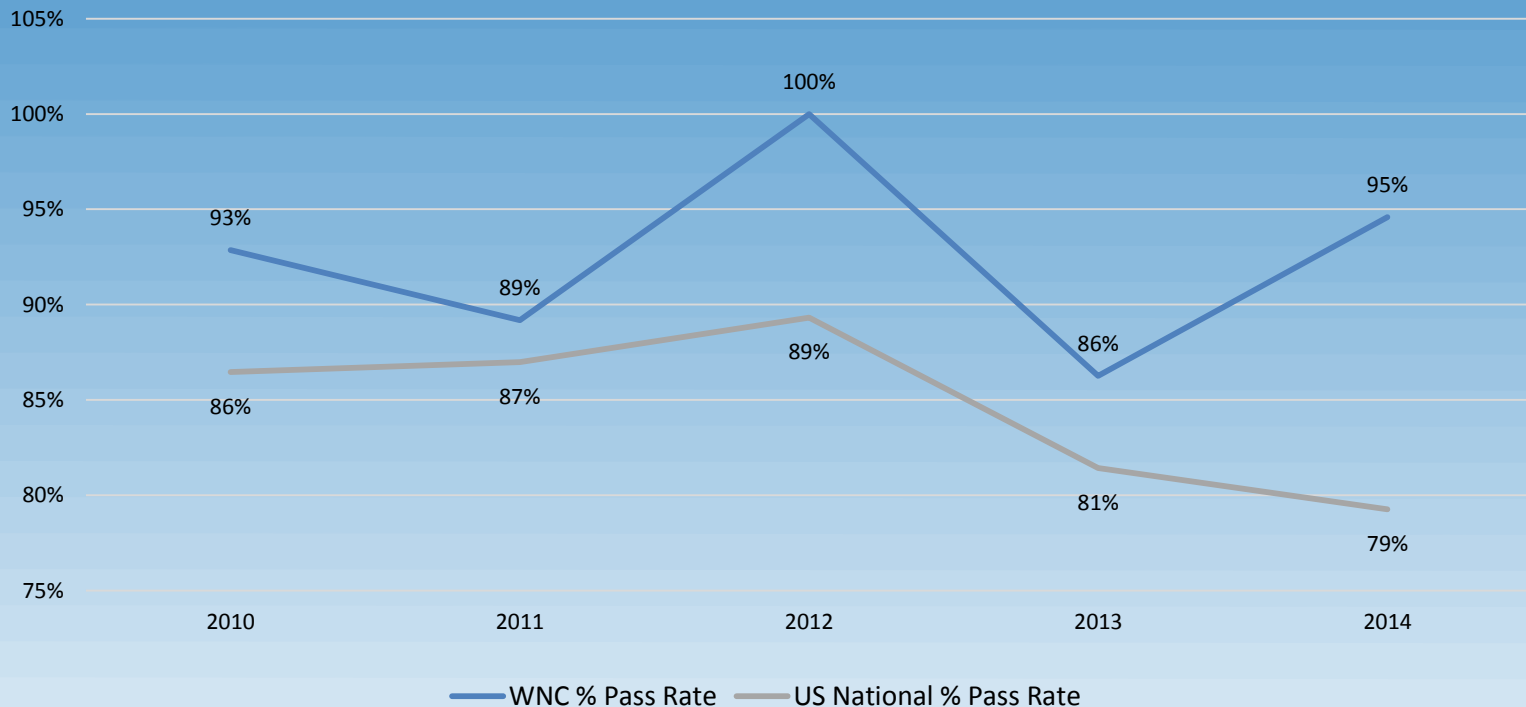
(BOARD OF REGENTS' AGENDA 06/11/15 & 06/12/15) Ref. BOR-21, Page 13 of 22

*Start Here ... Go Anywhere* • [www.wnc.edu](http://www.wnc.edu)

# Western Nevada College

## How do students perform on nationally-normed tests?

NCLEX Pass Rate



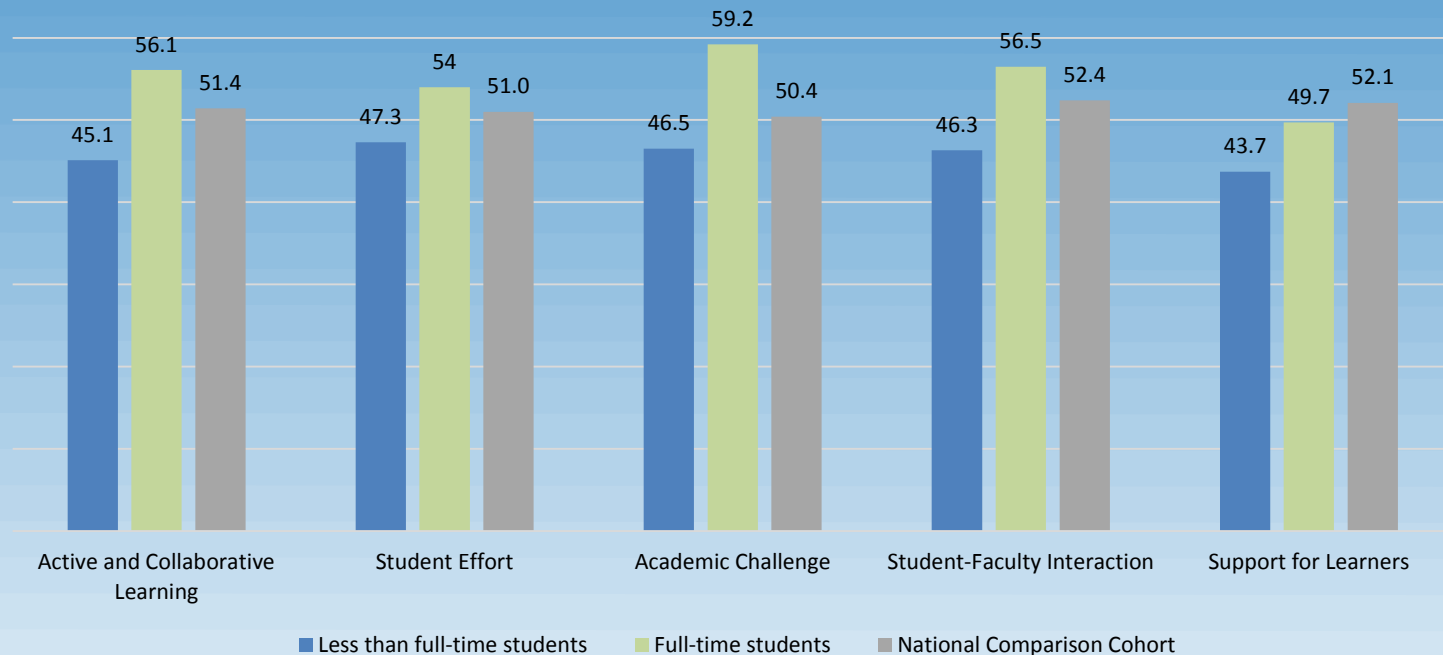
(BOARD OF REGENTS' AGENDA 06/11/15 & 06/12/15) Ref. BOR-21, Page 14 of 22

*Start Here ... Go Anywhere* • [www.wnc.edu](http://www.wnc.edu)

# Western Nevada College

## What do the results of the Community College Survey of Student Engagement (CCSSE) show about our institution?

### Benchmark Overview by Enrollment Status – Spring 2014



For full-time students WNC is better than the national norms in all areas except Support for Learners

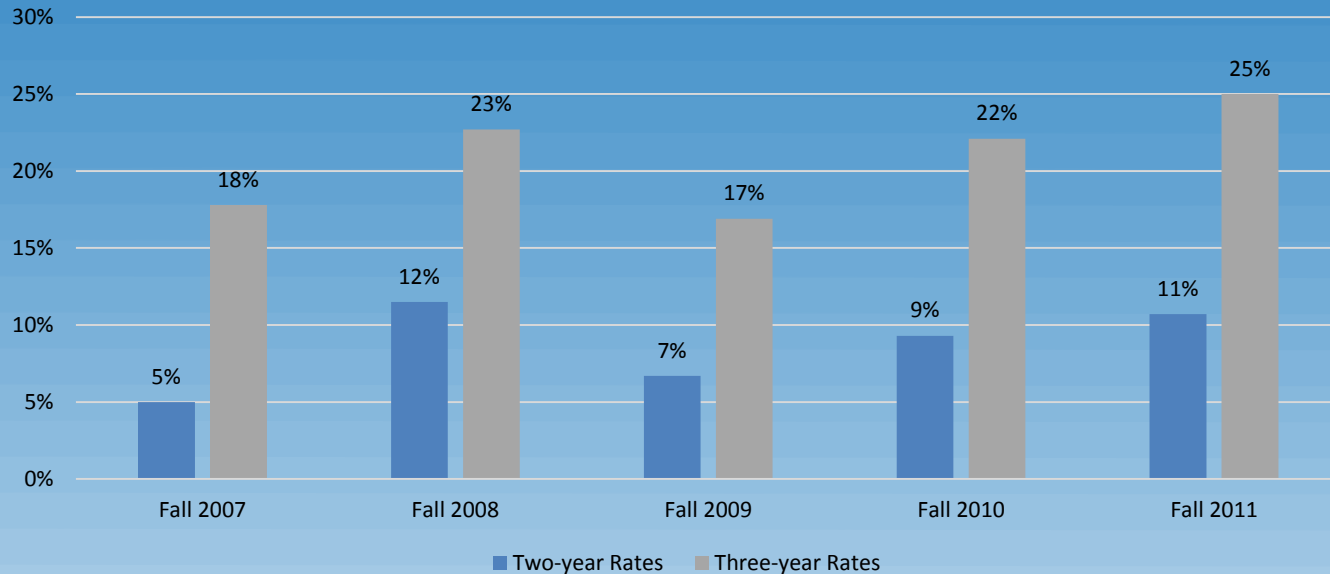
(BOARD OF REGENTS' AGENDA 06/11/15 & 06/12/15) Ref. BOR-21, Page 15 of 22

*Start Here ... Go Anywhere* • [www.wnc.edu](http://www.wnc.edu)



# Western Nevada College

## Graduation rates for first-time, full-time students



- Target three-year graduation rate: 33%
- National median for three-year graduation rates: 19%
- Two-year rate: percent of students receiving a certificate within one year or an associate's degree within two years.
- Three-year rate: percent of students receiving a certificate within one and one-half years or an associate's degree within three years.



(BOARD OF REGENTS' AGENDA 06/11/15 & 06/12/15) Ref. BOR-21, Page 16 of 22

*Start Here . . . Go Anywhere* • [www.wnc.edu](http://www.wnc.edu)



# Western Nevada College

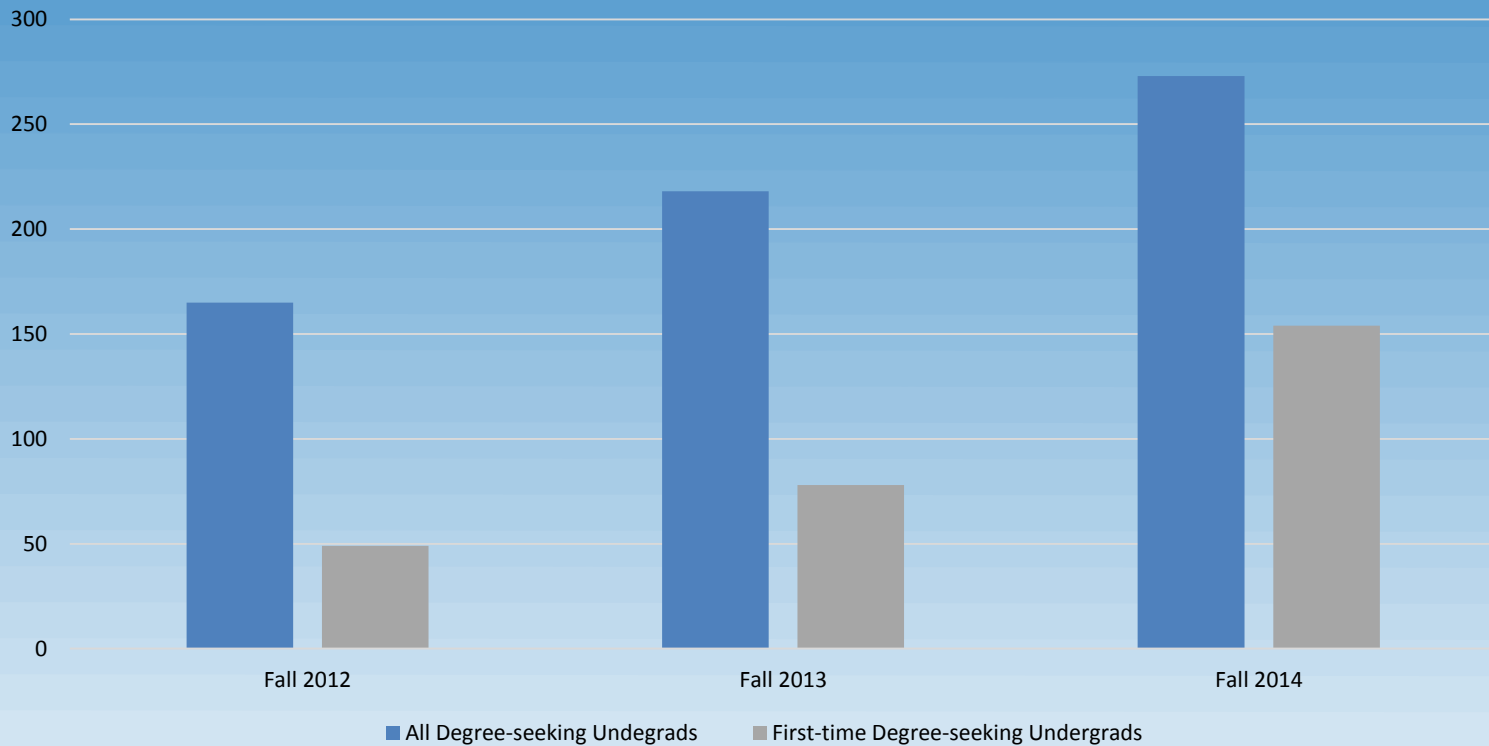
## Challenges to students graduating on time

- Significant work and family obligations - 62% degree-seeking students are part-time
  - 15-to-Finish Campaign has helped – the percent of first-time, degree-seeking students, ages 18-24, enrolled in 15 or more credits has gone from 12% in fall 2012 to 29% in fall 2014
- High financial need - 55% degree-seeking students are eligible for federal Pell grants
- Unprepared for college work – 51% recent high school grads placed into remedial classes



# Western Nevada College

## 15 to Finish: students ages 18 – 24 enrolled in 15 credits or more



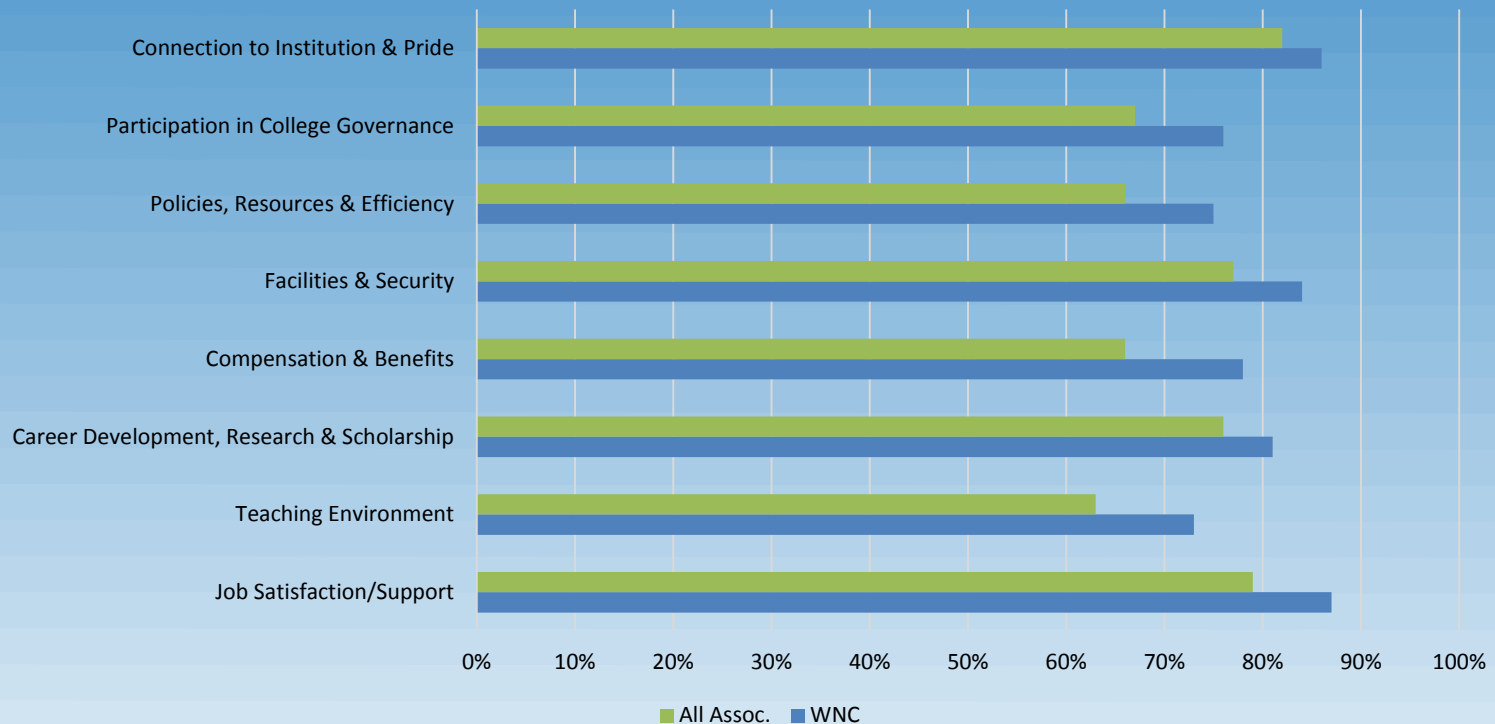
(BOARD OF REGENTS' AGENDA 06/11/15 & 06/12/15) Ref. BOR-21, Page 18 of 22

*Start Here ... Go Anywhere* • [www.wnc.edu](http://www.wnc.edu)

# Western Nevada College

When was the most recent campus climate survey on academic freedom and intellectual diversity?

## Chronicle of Higher Education Best Colleges to Work For - 2009



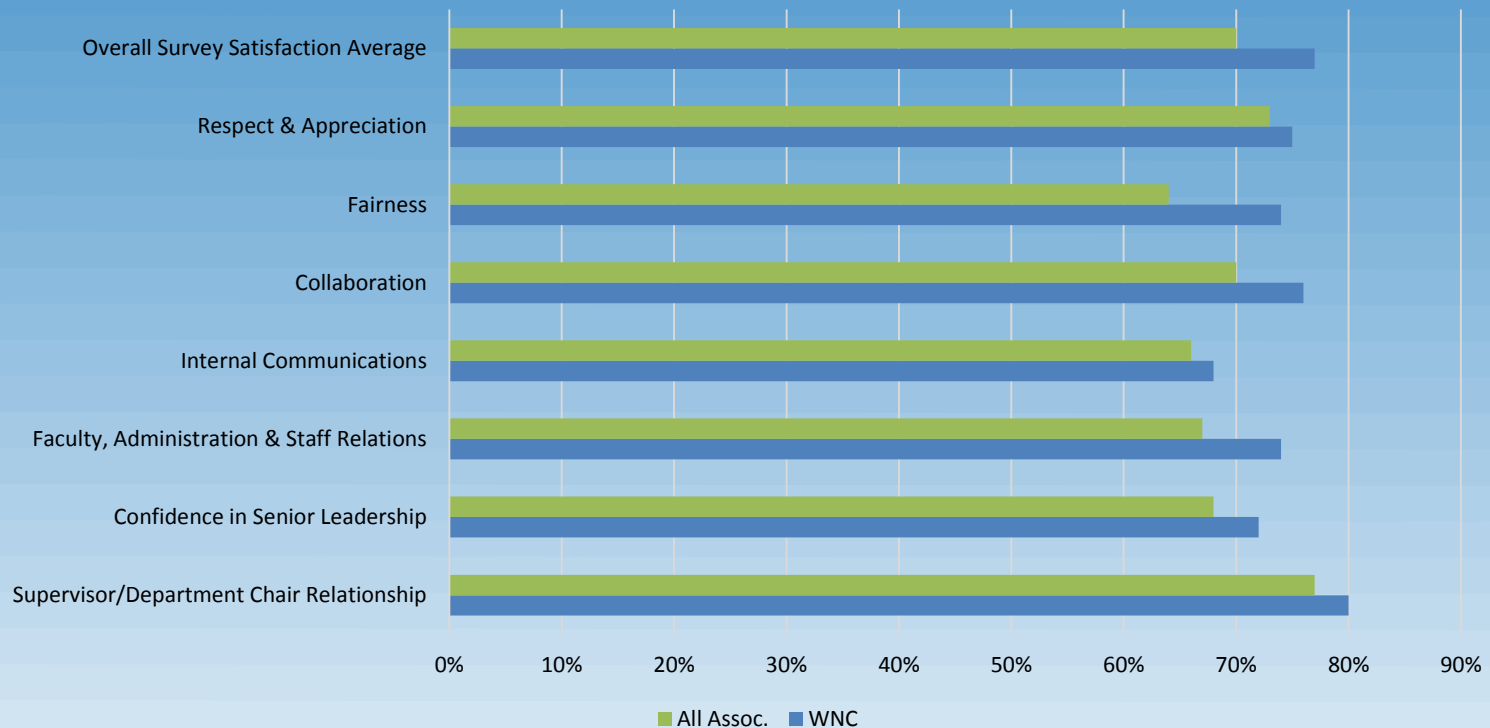
(BOARD OF REGENTS' AGENDA 06/11/15 & 06/12/15) Ref. BOR-21, Page 19 of 22

*Start Here ... Go Anywhere* • [www.wnc.edu](http://www.wnc.edu)

# Western Nevada College

When was the most recent campus climate survey on academic freedom and intellectual diversity?

## Chronicle of Higher Education Best Colleges to Work For - 2009



(BOARD OF REGENTS' AGENDA 06/11/15 & 06/12/15) Ref. BOR-21, Page 20 of 22

*Start Here ... Go Anywhere* • [www.wnc.edu](http://www.wnc.edu)

## Other Performance Metrics

- Graduation rates, persistence rates, transfer rates
- Performance pool measures (state mandated)
  - FTE and enrollment
  - Degrees, certificates and skills preparation
  - At risk student completions
  - Gateway course completers
- Ratio of full-time to part-time faculty



# Western Nevada College

## In closing

- From FY 2007 to FY 2016 WNC's anticipated total state General Fund revenue will have decreased by 44%, from \$21,124,413 to \$11,880,772
- Student FTE has remained relatively constant – dropping only 0.7% from FY04 to FY14 with an anticipated increase of 3.5% in 2015
- During the same time period, WNC's degrees and certificates awarded increased by 39%, from 406 to 564
- Growth initiatives
  - Jump Start
  - Military and Veterans
  - Prison program
  - Workforce/Advanced Manufacturing

Questions?



(BOARD OF REGENTS' AGENDA 06/11/15 & 06/12/15) Ref. BOR-21, Page 22 of 22

*Start Here . . . Go Anywhere* • [www.wnc.edu](http://www.wnc.edu)