



# TMCC Facility Master Plan

Dr. Maria C. Sheehan

June 2014



# TMCC Facility Master Plan (FMP)

FMP guides the development of campus facilities over the next ten or more years with regard to land use, open space, density of development, primary circulation systems and linkages with the surrounding community in support of the college's mission

- BOR requires each institution to present its facility master plan. TMCC last approved FMP was in 2004



# FMP Scope of Work

- Review and update 2004 development plan
- Classroom utilization and space planning
- Support for student life and services
- Offsite capacity
- Vehicular and pedestrian circulation
- Landscape and hardscape
- Staging and Implementation



# Master Plan Guiding Principles

- Promote effective utilization of existing capacity
- Provide ease of access to college services by students and the community



# Results/Recommendations

## Improve Functionality

- Strengthen Focus Centers at Edison, Meadowood and Redfield sites
- Dandini as a cross discipline center with administrative functions
- Student Life spaces are expanded and enhanced while Student Services on ground floor of Red Mountain
- Learning Center as center of campus at Dandini
- Improve classroom utilization and space planning
- Improve vehicular and pedestrian circulation and capacity

## Efficient Utilization

- Room coding changed to match existing conditions
- Capacities of all classroom and class labs should be based on actual seat/station counts
- Existing tier system should be removed
- College should use an “optimizer” in conjunction with scheduling software
- Consider utilizing space in off-peak hours (Fridays and weekends)
- Consider upsizing or eliminating small, underutilized classrooms



# Projects

## Fine Arts Center



# Projects

## Learning Center



# Projects

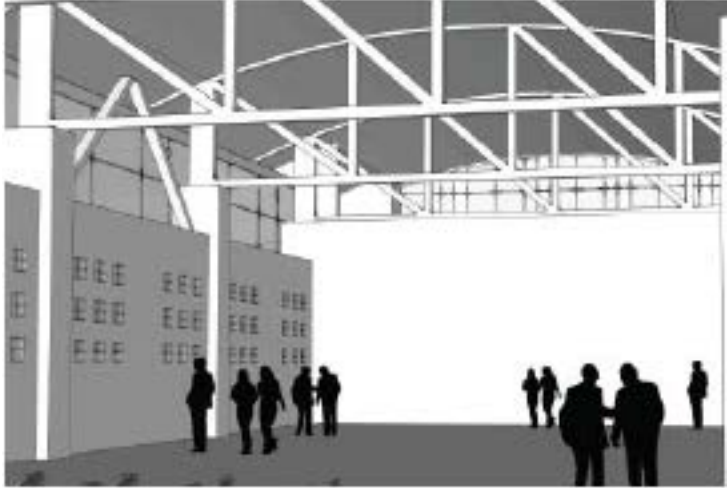
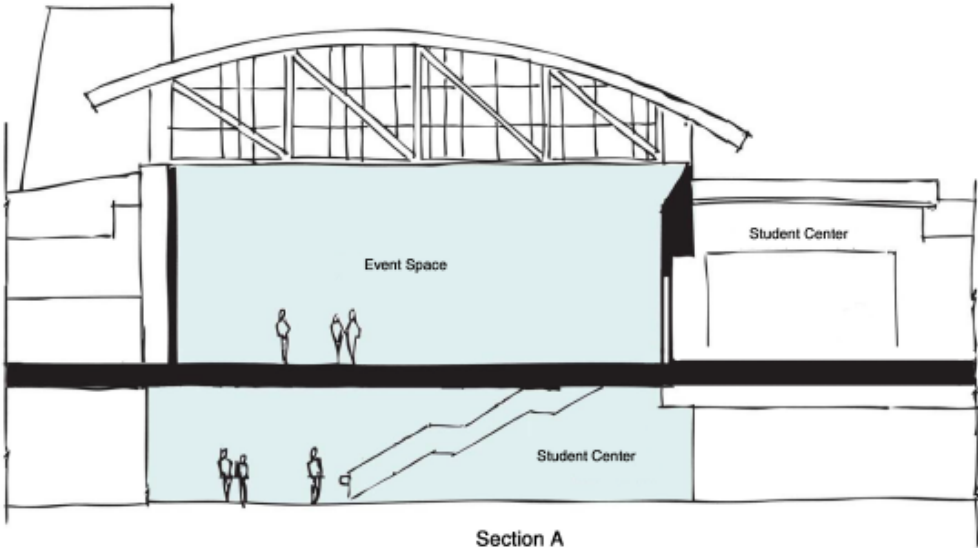
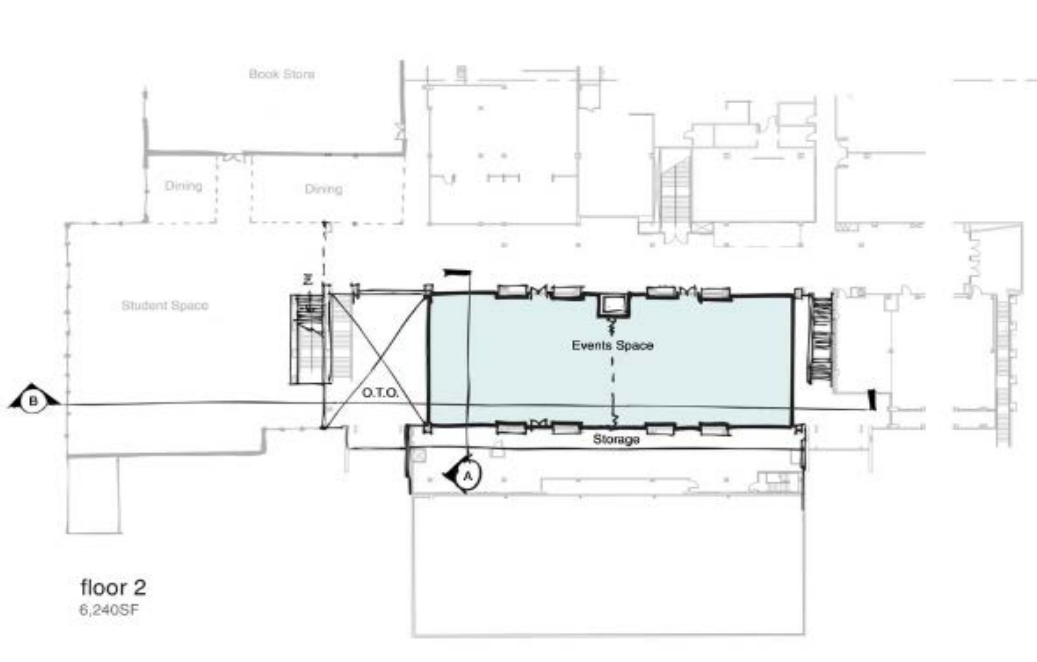
## Red Mountain Building North Entrance





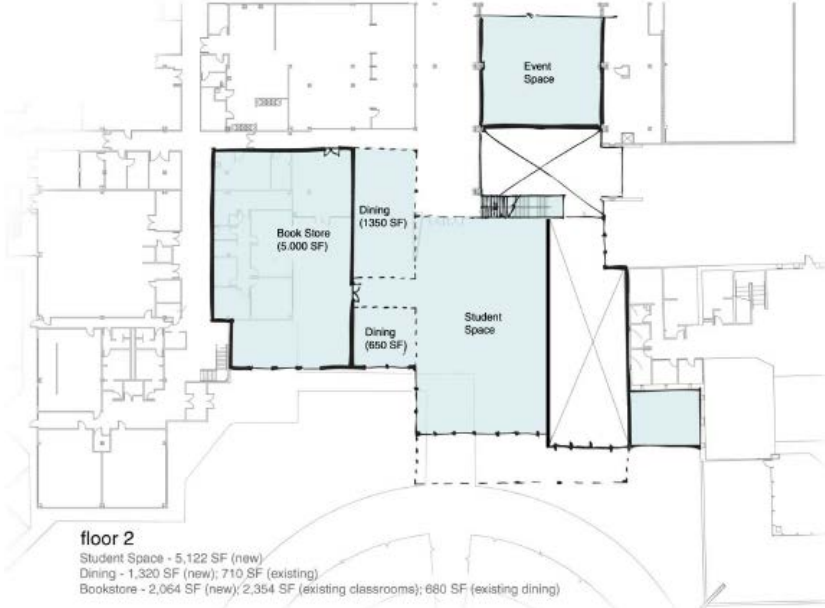
# Projects

## Events Center



# Projects

## Student Center



# Funding Strategies

## Becoming entrepreneurial

- Community Support, capital campaign e.g. Redfield Health Center and IGT Renovation
- Building Fee
- Capital Improvement Fees (balancing with deferred maintenance needs)
- Public Private Partnership (P3)
- Others?



# Questions?

